

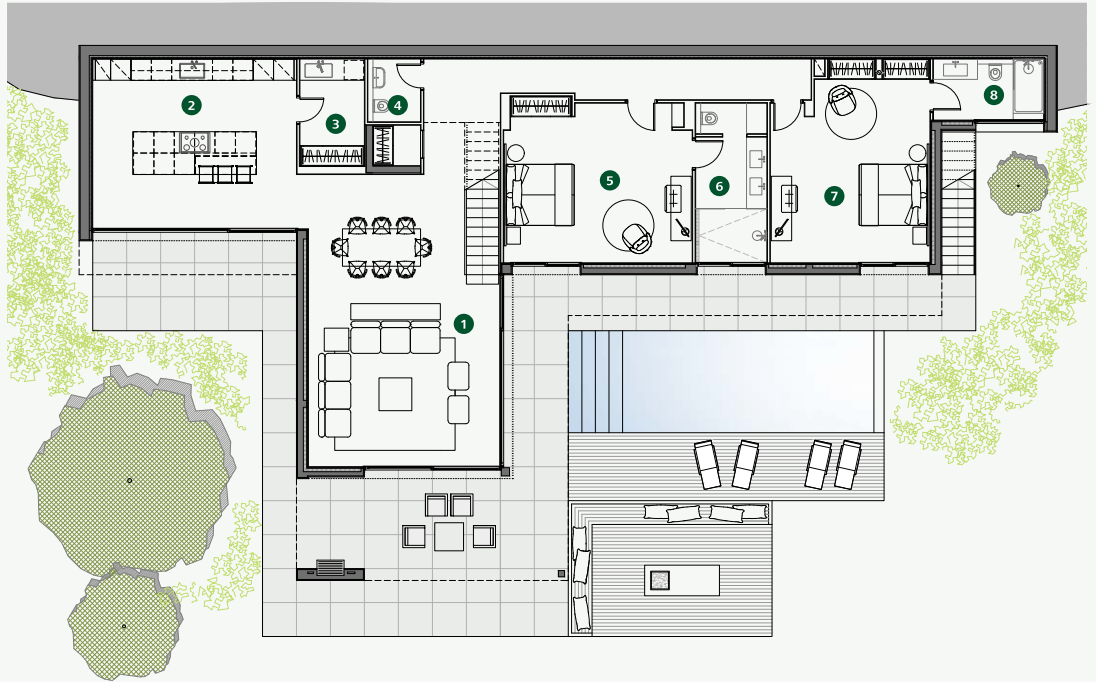
The Pineda 17 benefits from a unique location facing the 8th hole of the Stadium Course. The views and the stunning backdrop of the Montseny Massif are a defining feature from the moment you arrive. A porch allowing for 2 parking spaces opens out to the views creating a breath-taking arrival. The main entrance on the first level unveils the living area on the lower floor through an indoor patio, creating a sense of space and connectivity to the outdoors.

Once downstairs, the L-shaped villa takes full advantage of the views, connecting indoors and outdoors through the living room to the 500m² garden and its infinity pool. The views can be enjoyed from the Bulthaupt-designed kitchen, while the floor-to-ceiling glass panels, allow for maximum enjoyment of the natural light. The first floor hosts a spectacular en-suite Master Suite with its large panoramic balcony overlooking the garden and the Golf course.



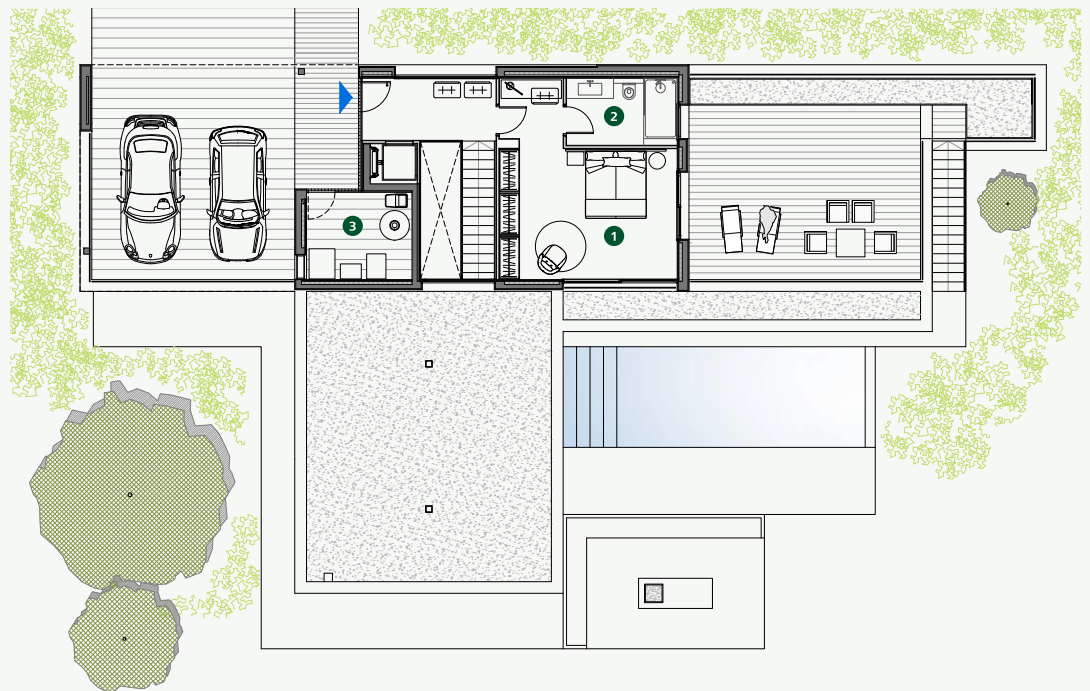
FIRST FLOOR

- 1 Dining Living Room
- 2 Kitchen
- 3 Laundry
- 4 Guest Toilet
- 5 Bedroom
- 6 Bathroom
- 7 Bedroom
- 8 Bathroom



GROUND FLOOR

- 1 Master Bedroom
- 2 Master Bathroom
- 3 Storage Room



SPECIFICATIONS

Architect	Gerard Oliver Bofill
Price	€2.300.000
Interior surface	280 m2
Exterior surface	210 m2
Bedrooms	3
Bathrooms	3
Guest Toilet	1
Pool	27 m2
Storage Room	
Private Parking	
ROP Included	1
Furnished	
Heating	Heating floor
Domotics	Control 4
Communications	Optical Fibre, Wi-Fi Access Points
Energy Qualification	Rating B



CONTACT

Camiral Golf & Wellness
Carretera N-II km701,
17455 Caldes de Malavella, Girona, Spain
+34 972 472 957
realestate@camiral.com
www.camiral.com