



CAMIRAL

GOLF & WELLNESS

LA SELVA

25



Set in a 500 hectare Catalan countryside, the unique properties at Camiral Golf & Wellness are designed to let the beauty of their woodland surroundings to pour inside.

Blending nature into the architecture of our sustainable properties, the design focuses on mental and physical wellbeing throughout. Not only will residents benefit from award-winning design and architecture, they will also step outside into our uninhibited Catalan landscape and enjoy its endless mountain views.

Residents will certainly appreciate the abundance of experiences crafted to rejuvenate the mind and the body: from a round on Camiral Golf & Wellness European Tour golf courses, the Stadium and the Tour Course, to walking through our kitchen garden to pick your own organic produce for the table.

Being among the Catalan pine trees is a truly holistic way to experience life. No aspect of our exceptional properties is left unturned, with carefully considered nutrition, comfort and exercise set to enhance everyday living.

Our IAGTO sustainability award-winning resort offers a glimpse of the future of environmentally conscious living cultivating Camiral Golf & Wellness philosophy to celebrate the finer things in life: eating well, being well and living well.

www.camiral.com



CAMIRAL
GOLF & WELLNESS

25 LA SELVA

Selva 25 fuses luxury with architectural brilliance to transcend the ordinary. Its elevated plot is one of the most premium locations at Camiral, with sweeping uninterrupted golf course views and the Montseny mountains to the west. As it's right at the end of a south-facing slope, the property feels secluded from the outside, with just the mountains for company.

The home has been designed around a central courtyard, which is created to give you the feeling of living in a forest amidst a canopy of trees. Its unique ovoid shape is a touch of architectural excellence from Lagula Architects, which take inspiration from the sun in a bid to frame the surrounding landscape perfectly. To truly open itself up to the views, Selva 25 has an open-plan patio combined with covered terrasses, which blend with nature.

Selva 25 embodies the essence of a home: a cozy ambiance and perfect balance between functionality, aesthetics and individuality, which has been created in collaboration with award-winning Studio Piet Boon. The oval shape and seamless layout allow contact between the various spaces and floors. The choice of light natural colors and high-quality materials, applied in various customized interior elements with Piet Boon's signature, emphasize the house its truly remarkable quality.

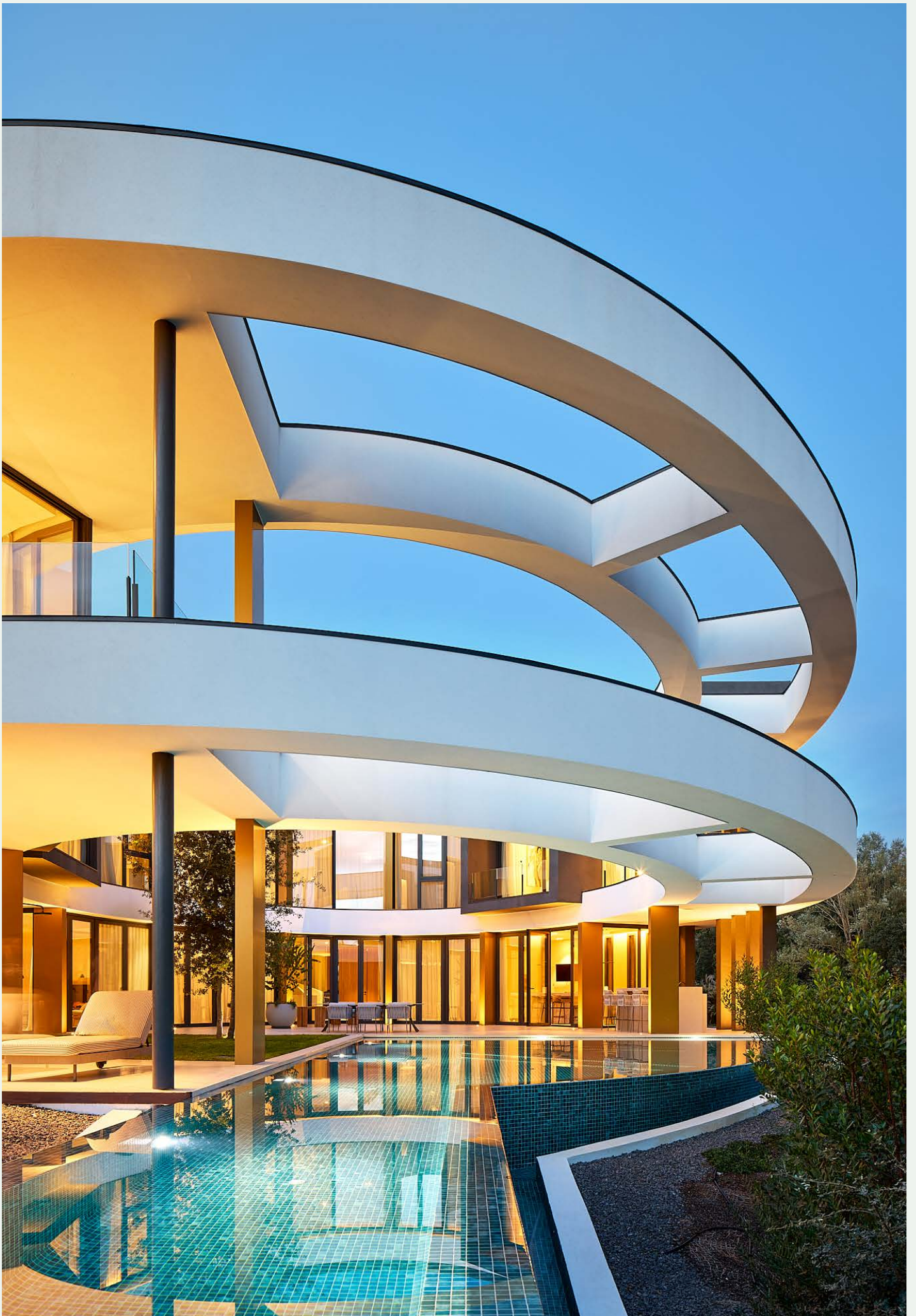
The home was an exciting challenge for Lagula Architects, who found harmony between the circular shape of the building and the floor plan to create something that felt cohesive for its owner. Spread across three levels, it is fused together with a central organic shaped sculpted staircase, which although having a practical function, is an art-piece on itself.

When entering at the ground floor level, a floor-to-ceiling window façade combined with a spectacular atrium emphasize the connection of in- and outside areas.

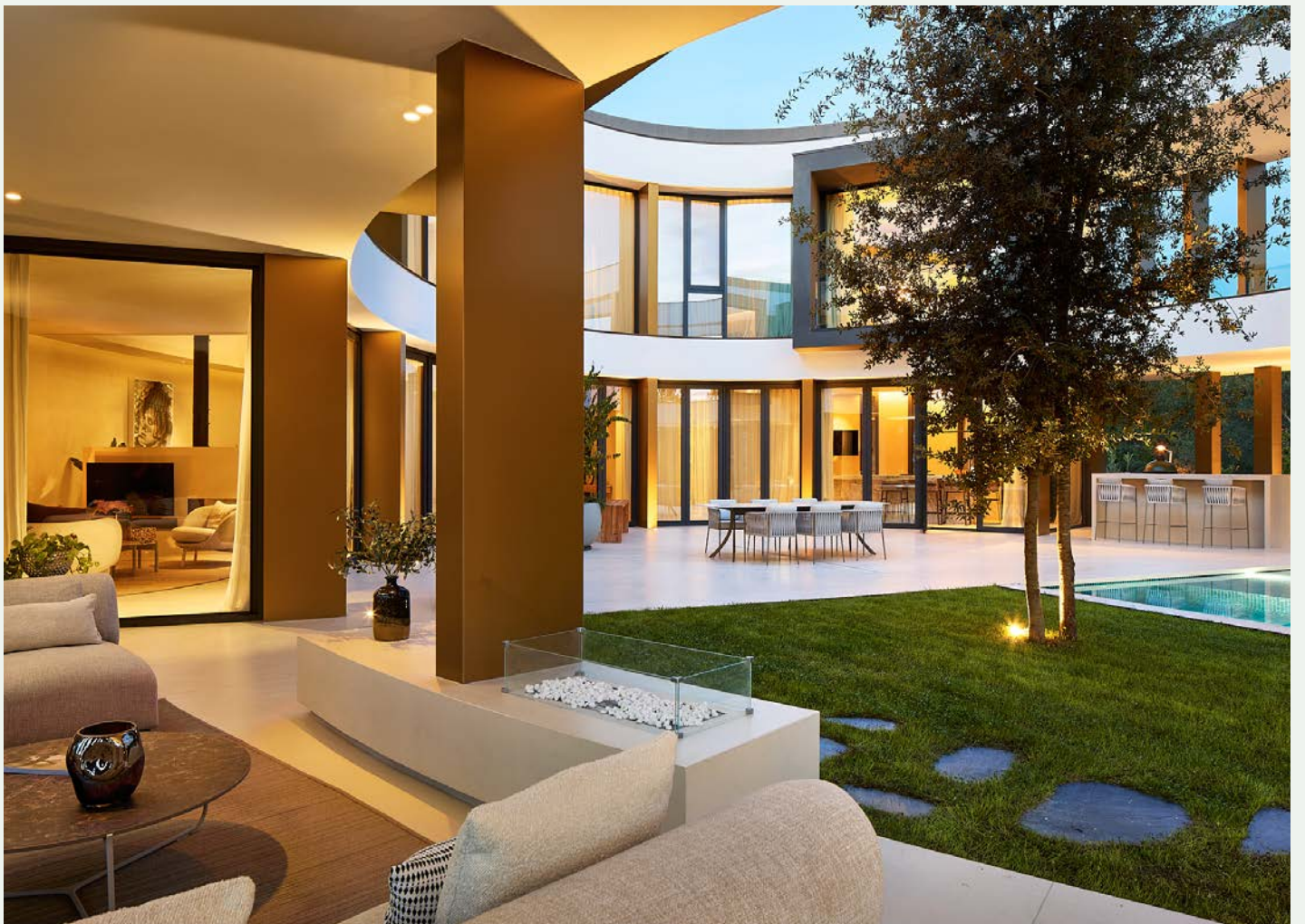
Various living spaces have been created with the individual enjoyment as well as celebrating life with family and friends in mind. Throughout the indoor area's and at the covered terrasses a high-end music system allows for an individual choice per area, suitable to the mood and occasion. In the basement, the wellness area with sauna, steam bath and full equipped fitness provides a sanctuary for the body and soul.

Selva 25, although powerful in its architecture, has integrated the ease and peace and quiet of the natural surroundings. A safe haven to withdraw from the hectic world and recharge but also providing the most stunning scenery to enjoy the good vibes of life with dear and near ones.









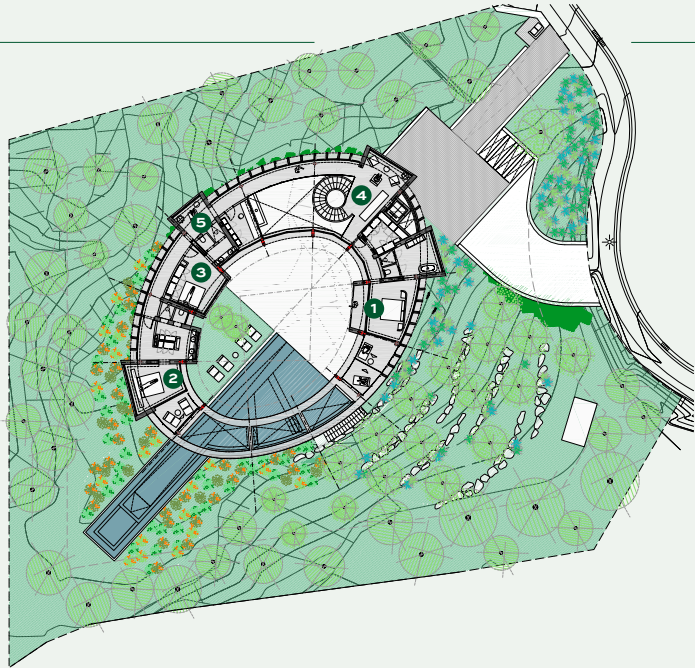






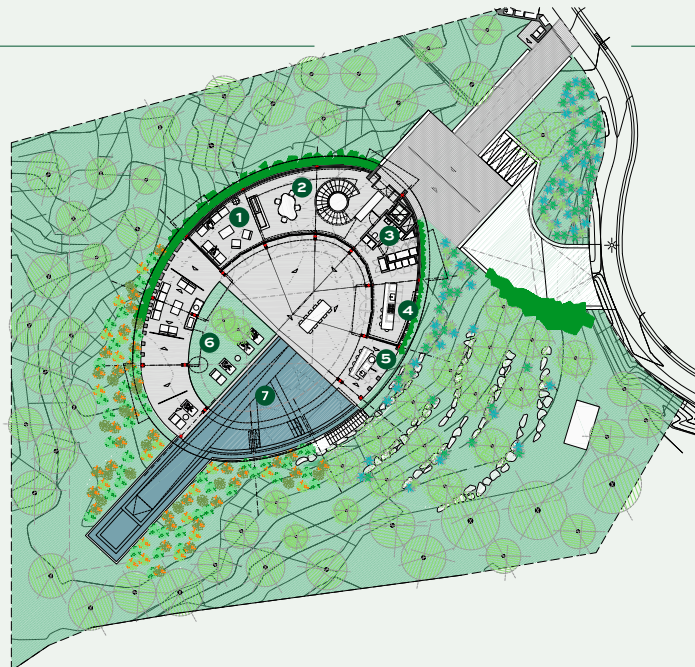
FIRST FLOOR

- 1 Master bedroom
- 2 Bedroom
- 3 Bedroom
- 4 Foyer
- 5 Studio



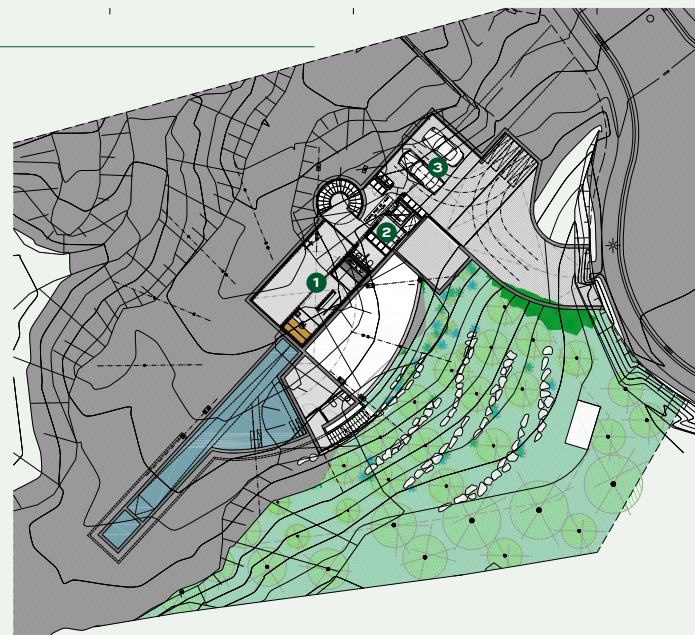
GROUND FLOOR

- 1 Living Room
- 2 Dining Room
- 3 Guest Toilet
- 4 Kitchen
- 5 Outdoor kitchen
- 6 Terrace
- 7 Swimming pool



BASEMENT

- 1 Multipurpose room (sauna, gym)
- 2 Laundry
- 3 Closed parking



SPECIFICATIONS

Architect	Lagula Arquitectes SLP
Price	On request
Plot	2368,50 m ²
Interior Built Area	497 m ²
Outdoor area	1596,15 m ²
Bedrooms	3
Bathrooms	3
Guest toilet	1
Private Parking	
Kitchen	Tailormade
Bathrooms	Tailormade
Lift	OTIS
Air Conditioning	Mitsubishi
Heating	Heating floor
Domotics	Control 4
Communications	Optical Fibre, Wi-Fi Access Points
Energy Qualification	Rating B



This is a document provided for information purposes only, the Developer reserves the right to modify the figures and features & specifications because of technical or legal circumstances. The developer reserves the right to change the finishes for others of equal or higher quality than those specified. Computer generated image for illustrative purposes only. Consumption and emission values are for guidance only and correspond to a standard home with a specific location, orientation and finishing materials.

RESORT MAP

CAMIRAL GOLF & WELLNESS

Carretera N-II km 701,
17455 Caldes de Malavella,
Girona, Spain

+34 972 472 957

realestate@camiral.com

www.camiral.com

